

ARTS EDUCATION/  
LEARNING

**Berkeley City College**

• Arts and Cultural Studies  
• Multimedia Arts  
2050 Center St.  
510 981-2800  
www.berkeleycitycollege.edu

**Berkeley Rep School of Theatre**

• Classes for youth & adults  
• Summer Theatre Intensive  
2071 Addison St.  
510 647-2972  
www.berkeleyrep.org

**East Bay Media Center**

• Summer Teen Media Camp  
• Documentary & Screen Writers  
Workshops  
1939 Addison St.  
510 843-3699  
www.eastbaymediacenter.com

**Freight & Salvage Coffeehouse**

• Sing Out Loud Theatre Camp  
• Fiddle Camp  
2020 Addison St.  
510 859-1127  
www.freightandsalvage.org

**Jazzschool**

• Summer Programs  
• Bachelor of Music in  
Jazz Studies  
2087 Addison St.  
510 845-5373  
www.jazzschool.com



**Kathryn Roszak's Danse  
Lumiere**

• "Dance on Center" classes  
for ages 3-teen  
2055 Center St.  
510 233-5550  
www.dlkdance.com

**Subterranean Arthouse**

• Performance art workshops  
2179 Bancroft Way  
510 981-1281  
www.subterraneanarthouse.org

**UC Berkeley Osher Lifelong  
Learning Institute (OLLI)**

• Courses, lectures, & special  
events for older adults.  
510 642-9934  
olli.berkeley.edu

ANNUAL FESTIVALS

MARCH  
Jewish Music Festival  
Persian New Year Festival

APRIL  
Earth Day

JUNE  
Family Fun Festival

AUGUST  
Center Street Summer Cinema  
Downtown Berkeley MusicFest  
Berkeley Coffee & Tea Festival

SEPTEMBER  
Berkeley Old Time Music Convention &  
String Band Contest

OCTOBER  
Watershed Environmental Poetry  
Festival  
Indigenous People's Day Pow Wow  
Horror Film Festival

NOVEMBER  
Berkeley Video & Film Festival

DECEMBER  
Farmers Market Holiday Crafts Fair

Directory updated September 2012.

**Photo Credits:** Aurora Theatre Company,  
Berkeley Repertory Theatre, Kevin  
Berne, The David Brower Center,  
Downtown Berkeley Association,  
Freight & Salvage Coffeehouse, Hali  
McGrath, Jazzschool, The Marsh,  
Patrick Power.

**explore the rich diversity**  
OF DOWNTOWN BERKELEY'S ARTS & CULTURE

A WORLD CLASS ARTS DISTRICT

Downtown Berkeley's award winning arts district offers a rich diversity of cultural arts and entertainment. With the Berkeley Repertory Theatre as an anchor, the district has blossomed into a hub for live theatre and music and performing arts education. Movie theatres offer a variety of independent and popular films as well as special film festivals.



Downtown Berkeley Association  
2230 Shattuck Avenue Suite C Berkeley CA 94704  
DowntownBerkeley.com  
510.549.2230



it starts here.

**DOWNTOWN  
BERKELEY**

it starts here.

**DOWNTOWN  
BERKELEY**

**arts +  
entertainment**



**taste. create. experience.**



# experience the arts

OF DOWNTOWN BERKELEY



## DANCE

**Kathryn Roszak's Danse Lumiere**  
2055 Center St.  
510 233 5550  
www.dlkdance.com

## GAME PLAYING

**Games of Berkeley**  
2151 Shattuck Ave.  
510 540-7822  
www.gamesofberkeley.com

**Eudemonia**  
2154 University Ave.  
510 883-0814  
www.eudemonia.net

## BILLIARDS

**Thalassa**  
2367 Shattuck Ave.  
510 848-1766  
www.thalassabar.com

## CHILDREN

**Habitot Children's Museum**  
2065 Kittredge St.  
510 647-1111  
www.habitot.org



## CULTURAL

**Mangalam Center**  
2018 Allston Way  
510 809-1100  
www.nyingmatrust.org

**Persian Center**  
2029 Durant Ave.  
510 848-0264  
www.persiancenter.org

**Buddhist Churches of America Jodo Shinshu**  
2140 Durant  
510 809-1401  
www.jodoshinshucenter.org

## MEDIA

**Berkeley Community Media**  
2239 MLK Jr. Way  
510 848-2288  
www.betv.org

**East Bay Media Center**  
1939 Addison St.  
510 843-3699  
www.eastbaymediacenter.com

**KPFA - FM 94.1**  
1929 Martin Luther King Jr. Way  
510 848-6767  
www.kpfa.org

## MOVIES

**Landmark's California Theatre**  
2113 Kittredge St.  
510 843-FILM (3456)  
www.landmarktheatres.com

**Landmark's Shattuck Cinemas**  
2230 Shattuck Ave.  
510 843-FILM (3456)  
www.landmarktheatres.com

**United Artists Cinema**  
2274 Shattuck Ave  
510 777-3456  
www.uatc.com

## MUSEUM

**Berkeley Historical Society**  
1931 Center St.  
510 848-0181  
www.ci.berkeley.ca.us/histsoc



**Magnes Collection of Jewish Art & Life**  
2121 Allston Way  
www.magnes.org

**UC Berkeley Art Museum & Pacific Film Archive**  
(coming soon)

## MUSIC / NIGHTCLUBS

**BEC's Bar & Bistro**  
2271 Shattuck Ave.  
510 647-1790  
www.becbistro.com

**Bobby G's**  
2072 University Ave.  
510 665-8866  
www.bobbygpsizzeria.com

**Freight & Salvage Coffeehouse**  
2020 Addison St.  
510 644-2020  
www.freightandsalvage.org



**Jazzschool**  
2087 Addison St.  
510 845-5373  
www.jazzschool.com

**Jupiter**  
2181 Shattuck Ave.  
510 843-8277  
www.jupiterbeer.com

**Shattuck Down Low**  
2284 Shattuck Ave.  
510 548-1159  
www.shattuckdownlow.com

**Saturn Space Lounge**  
2175 Allston Way  
510 845-8505

**UC Theatre Nightclub** (coming soon)

## MUSIC / RETAIL

**The Bassment**  
(at the Jazzschool)  
2087 Addison St.  
510 845-5373  
www.jazzschool.com/bassment

**Pegasus Books & CDs**  
2349 Shattuck Ave.  
510 649-1320  
www.pegasusbookstore.com

**Half-Price Books**  
2036 Shattuck Ave.  
510 526-6080  
www.halfpricebooks.com

# create art

IN DOWNTOWN BERKELEY

**Shrimati's Asian Indian Music**  
2011 University Ave.  
510 548-6220  
www.shrimatis.com

## THEATRE PERFORMANCE

**Aurora Theatre Company**  
2081 Addison St.  
510 843-4822  
www.auroratheatre.org

**Bay Area Children's Theatre (at Freight & Salvage)**  
2020 Addison St.  
510 296-4433  
www.bacatheatre.org

**Berkeley Repertory Theatre**  
2025 Addison St.  
888 4BRT-TIX (427-8849)  
www.berkeleyrep.org

**The Marsh Arts Center**  
2120 Allston Way  
510 282-6024  
www.themarth.org

**Subterranean Art House**  
2179 Bancroft Way  
510 981-1281  
www.subterraneanarthouse.org

## SPORTS BARS

**Beta Lounge**  
2129 Durant Ave.  
510 845-3200  
www.thebetalounge.com

**Bobby G's Pizzeria**  
2072 University Ave.  
510 665-8866  
www.bobbygpsizzeria.com

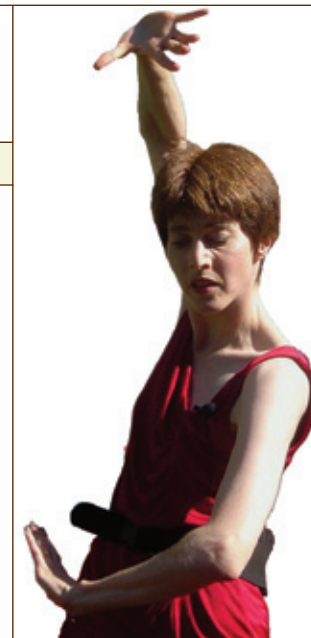
**Burger Meister**  
2237 Shattuck Ave.  
510 649-1700  
www.burgermeistersf.com

**Lot 68** (at the Shattuck Cinema)  
2230 Shattuck Ave.  
510 644-2992  
www.landmarktheatres.com/Lot68/Lot68.htm

**Sportivo Bar-Ristorante**  
2132 Center Street  
510 705-1801  
www.sportivobarristorante.com

## SYMPHONY

**Berkeley Symphony Orchestra**  
1942 University Ave., Suite 207  
510 841-2800  
www.berkeleysymphony.org



## VISUAL ARTS

**Addison Windows Gallery**  
2018 Addison St.  
510 981-7533

**Arpeggio Arts Passage**  
Curated by Kala Arts Institute  
2055 Center St.  
510 841-7000

**Epoch Frameworks**  
2199 Bancroft Way  
www.epochframeworks.com

**Hazel Wolf Gallery**  
(at the David Brower Center)  
2150 Allston Way  
510 809-0900  
www.browercenter.org

**Jerry Adams Gallery**  
(at Berkeley City College)  
2050 Center St.  
510 981-2800  
www.berkeleycitycollege.edu

**Milvia Window Display**  
Curated by Kala Art Institute  
2100 Milvia St.  
510 841-7000